



J.PSARRAS S+P ,CHART-PIRAEUS (since 1981)

Ph:+30 210 4123696 4133931 4115482

Fx:+30 210 4170618

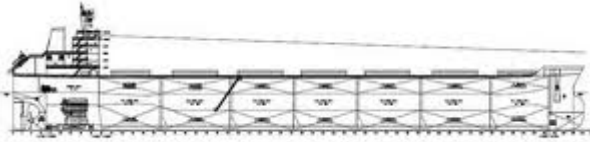
E'Mail: psarras@psarrasj.gr Website: www.psarrasj.gr
(Members of Hellenic Shipbrokers Association - 1984)

BI-MONTH REPORT

END OCTOBER 2015

The scope of this report is to assist our clients and friends with a quick glance every about 15 days to get a feeling of the market by reading the more interesting sales in view of higher or lower prices of the main vessels types as well as the demolition prevailing prices.





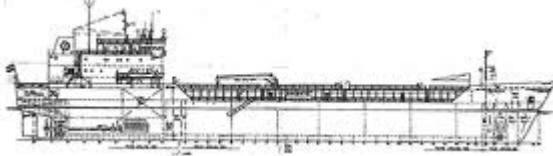
BULK CARRIERS

NAME	DWT	Y.O.B	P.O.B	PRICE
KATSURA	207791	2010	JAPAN	60.3 MIL USD TO JAPANESE
MOONLIGHT	75700	2010	CHINA	12.5 MIL USD TO ARGENTINEANS
BONANZA KOTOBUKI	75051	2012	JAPAN	18,3 MIL USD TO GREEKS
GRIGORPAN	53806	2002	CHINA	6,4 MIL USD TO GREEKS
VALERIE	57000	2008	CHINA	EN BLOC 27 MIL USD TO GREEKS
SOPHIA D	53565	2008	VIETNAM	
ELEANOR D	53200	2005	VIETNAM	
FLORENCE D	53000	2007	CHINA	
DUBAI FORTUNE	46638	1995	JAPAN	2,5 MIL USD TO UNDISCLOSED
EXPANDER	46644	2000	JAPAN	5,5 MIL USD TO SOUTH KOREANS
PRO TRADER	34682	2003	CHINA	5,2 MIL USD TO GREEKS
ATLANTIC BURNET	32142	2007	JAPAN	8.8 MIL USD TO HONG KONG BASED
LEO FOREST	31764	1998	JAPAN	4 MIL USD TO GREEKS
SIR WALTER SIR HENRY	18315	1996 1997	JAPAN	EN BLOC 6 MIL USD TO TURKISH



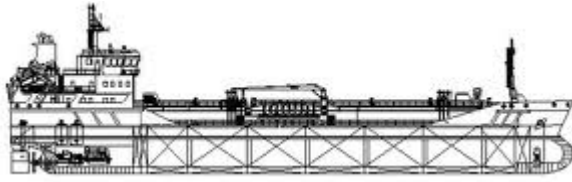
CONTAINER SHIPS

NAME	DWT	TEU	Y.O.B.	P.O.B	PRICE
LILAC	39295	2824	2005	S.KOREA	4,7 MIL USD TO UNDISCLOSED
HELGOLAND TRADER	34044	2470	1998	GERMANY	6,5 MIL USD TO GREEKS
KLAUS J HELENE J	26260	1900	1997	GERMANY	EN BLOC 11 MIL USD TO ASIANS
MSC EQUATOR	20211	1388	1993	GERMANY	About 3 MIL USD TO SINGAPOREANS
ROBERT	11257	868	2006	GERMANY	6.8 MIL USD TO SINGAPOREANS
BORUSSIA DORTMUND	7073	700	1998	GERMANY	1.8 MIL USD TO CYPRIOTS
SMARAGD	5095	510	1998	CHINA	1,3 MIL USD TO TURKISH



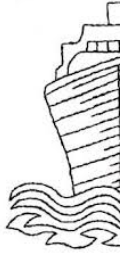
GENERAL CARGO

NAME	DWT	Y.O.B	P.O.B	PRICE
VESEU	4672	2008	UKRAINE	2.8 MIL USD TO UNDISCLOSED



TANKERS

NAME	DWT	HULL	Y.O.B	P.O.B.	PRICE
BLUE TOPAZ BLUE PEARL	321000	DH	2010	S.KOREA	EN BLOC 156 MIL USD TO SAUDI ARAGIANS
POWER D ENERGY R	319000	DH	2003	S.KOREA	EN BLOC 88 MIL USD TO US BASED
NEW MEDAL NEW FOUNDER	297395	DH	2009 2008	CHINA	EN BLOC 133 MIL USD TO GREEKS
MINERVA ATLANTICA MINERVA ANTARCTICA	114900	DH	2006	S.KOREA	EN BLOC 56 MIL USD TO ITALIANS
TH SOUND TH SERENADE	107600	DH	2009	JAPAN	EN BLOC 86 MIL USD TO GREEKS
SEVEN EXPRESS	46000	DH	2007	JAPAN	22 MIL USD TO CHINESE



DEMOLITION



BANGLADESH

NAME	LDT	DWT	Y.O.B	P.O.B.	PRICE
CAMELLIA	24581	207874	1990	S.KOREA	320 USD PER LDT
C. SUMMIT	17893	151143	1995	JAPAN	330 USD PER LDT
RUI FU UNION	8200	42293	1985	JAPAN	310 USD PER LDT



PAKISTAN

NAME	LDT	DWT	Y.O.B	P.O.B.	PRICE
ARAEVO	9680	28610	1991	UKRAINE	340 USD PER LDT
OCEAN LOVELY	6745	31217	1985	JAPAN	290 USD PER LDT



INDIA

NAME	LDT	DWT	Y.O.B	P.O.B.	PRICE
VILLE D'AQUARIUS	15904	44750	1996	S.KOREA	337 USD PER LDT
BOW VICTOR	9487	33000	1986	NORWAY	450 USD PER LDT (1200 tons STST)
MSC ANNA	3730	9536	1985	JAPAN	307 USD PER LDT

Disclaimer

All information stated in this report has been collected from a variety of maritime sources and is presented in good faith and without any guarantee from our part .

J. PSARRAS S+P CHARTERING, shall not accept any responsibility for any errors and/or omissions arising from this report and cannot be held responsible for any action taken and/or losses occurred as a result of the details included in this report.

Recirculation of same is not permitted without the written agreement of the aforementioned company, which is the only entitled one to produce copies of same.